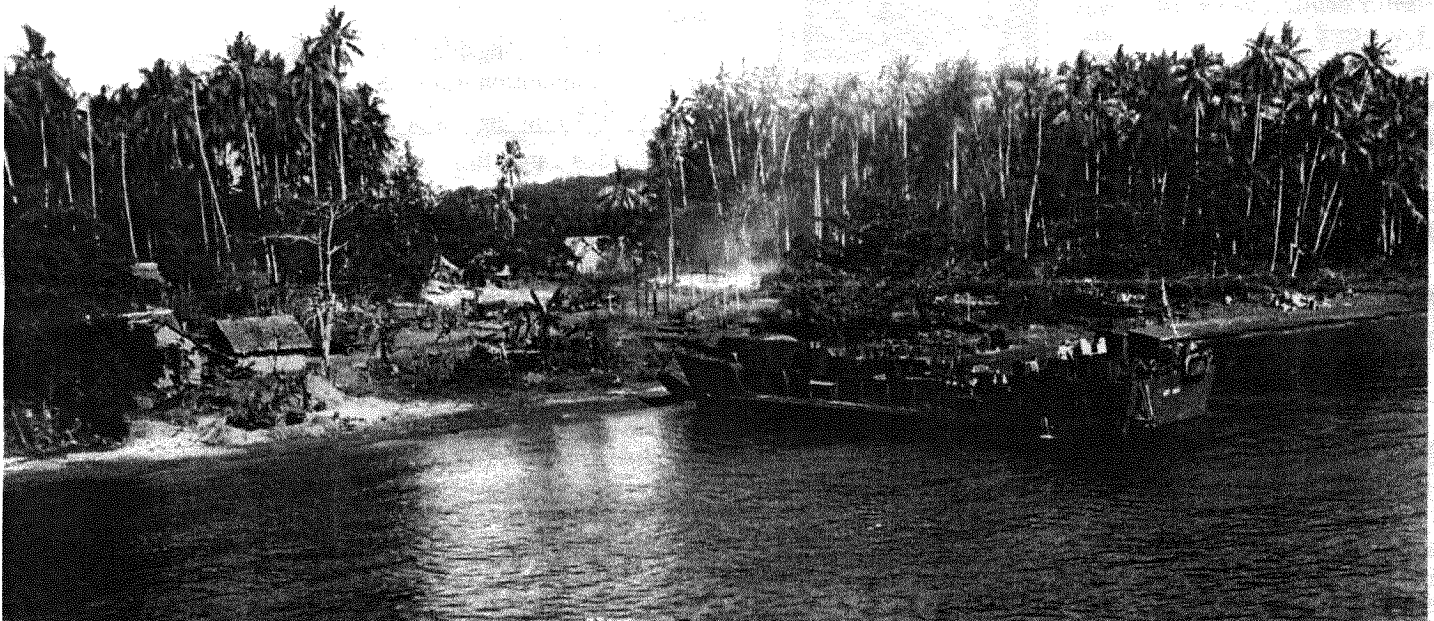
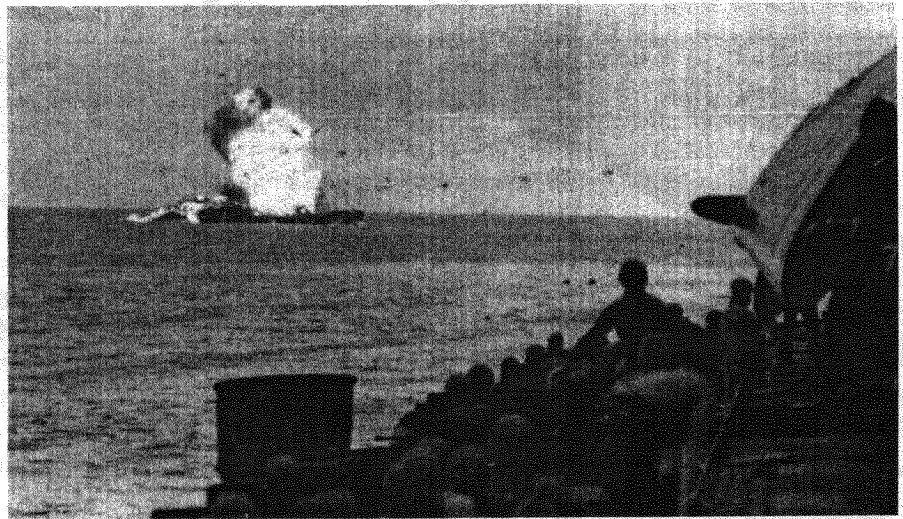


LCT-447 becomes the victim of a Japanese Kamikaze attack in action off Kerama Retto in the Ryukyu Islands, just west of Okinawa, on 6 April, 1945.

This remarkable image is sixth in a series of photos taken from the deck of the **USS Tulagi**.



Above:
LCT-325 at Mono Island (south of Bougainville in the Solomons) just after Allied ammo dump was hit by Jap mortar fire near native village, 27 Oct., 1943.



At Left:
LCT-1030 unloading an LVT (Landing Vehicle, Tracked) on Green Beach, Iwo Jima, 25 Feb., 1945.

All photos on this page are courtesy of National Archives.